


# 20 Month Old Black Angus Bulls



Lot 1  
DRI Magnitude U009

Lot # 1				DRI Magnitude U009	
Calved: 1/29/08		Purebred Black Angus Bull		AAA # Pending	
OCC Emblazon 854E <b>OCC Magnitude 805M</b> OCC PollyAnna 878G Sinclair Net Present Value <b>DRI Justine S006 NPV</b> DRI Justine 4129 BM				<b>Performance</b> BW 72 WW 683 YW 1193 Yrl Scrot 31.6 <b>Perf. EPD's</b> CED n/a BW -0.7 WW +49 YW +80 Milk +18 Scrotal n/a <b>Carcass EPD's</b> Marb +.02/+40 REA +.06/+16 Fat +.004/+032 <b>\$ Values</b> \$EN 5.81 \$W 31.57 \$F 19.81 \$G n/a \$B n/a	
Bull was too old at scanning to use his data for EPD's. However, his actual scan data was quite good, weighing 1350 with a 3.40 %IMF, a 14.7 sq. in. REA and only .20" of BF. These would normally make very positive EPD's Ratio 90, 111, 102 on BW, WW, YW. Very stout, muscular bull with lots of eye appeal and a heifer bull too boot! <i>(carcass EPD's are sire/dam)</i>					
Calving Ease	Carcass Traits	Growth	Replacement Females	\$EN	\$W
****	***	****	***	5.81	31.57

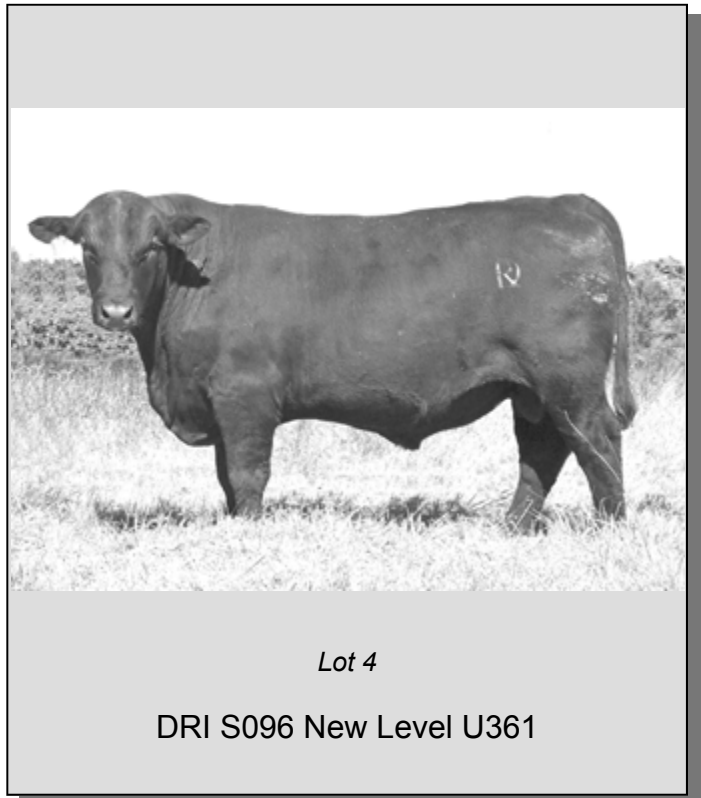
Lot # 2				DRI S049 PMag U322	
Calved: 3/24/08		Purebred Black Angus Bull		AAA # Pending	
O C C Magnitude 805M <b>DRI Precise Magnitude S049</b> DRI Enchantress 9042 Pre N Bar Emulation EXT <b>DRI Scotch Lass 3273 EXT</b> DRI Scotch Lass 5030				<b>Performance</b> BW 89 WW 619 YW 1102 Yrl Scrot 37.3 <b>Perf. EPD's</b> CED n/a BW +1.5 WW +42 YW +70 Milk +15 Scrotal -.09 <b>Carcass EPD's</b> Marb +.08 REA +.09 Fat -.008 <b>\$ Values</b> \$EN 11.79 \$W 26.86 \$F 13.00 \$G 15.10 \$B 28.48	
Smaller framed, very smooth made heifer bull. Nice hip and plenty of length. A very high \$EN indicates his daughters will take less resources in your herd, saving you money on feed year in and year out. We really like his younger EXT dam; she's a good solid cow with a nice udder and an easy going temperament. For use on heifers without sacrificing growth on the resultant calves!					
Calving Ease	Carcass Traits	Growth	Replacement Females	\$EN	\$W
****	***	****	***	11.79	26.86

Lot # 3				DRI Precise Magnitude U345	
Calved: 3/31/08		Purebred Black Angus Bull		AAA # Pending	
O C C Magnitude 805M <b>DRI Precise Magnitude S049</b> DRI Enchantress 9042 Pre Connealy Freightliner <b>DRI Nosegay R148 CF</b> DRI Nosegay 2191 Cal				<b>Performance</b> BW 88 WW 664 YW 1186 Yrl Scrot 39.0 <b>Perf. EPD's</b> CED n/a BW +1.1 WW +46 YW +81 Milk +15 Scrotal -.36 <b>Carcass EPD's</b> Marb +.08 REA +.04 Fat -.003 <b>\$ Values</b> \$EN 8.48 \$W 26.86 \$F 21.88 \$G 14.38 \$B 27.73	
A really well balanced set of growth & carcass EPD's in a heifer bull package. You won't see this kind of growth very often in a heifer bull. This young cow is really shaping up to be a good one, consistently producing light BW calves that go ahead and grow well. Carries his muscle way down low and is very long hipped.					
Calving Ease	Carcass Traits	Growth	Replacement Females	\$EN	\$W
****	***	****	***	8.48	26.86

# 20 Month Old Black Angus Bulls

## Lot # 4 DRI S096 New Level U361

Calved: 4/608 Purebred Black Angus Bull AAA # Pending			
Ironwood New Level			
<b>DRI New Level S096</b>			
Mill Brae RT Nosegay 7018			
Basin Max 602C			
<b>DRI Vixon 9144 602C</b>			
DRI Vixon 630 S E			
Ratio'd 106 & 104 on marbling & REA. Out of one of our best cows who's produced sale features and productive daughters and is now in her 10th year. Bulls like this will sire cows that'll stay in your herd and pay for themselves by staying productive for many years. He's square and stylish with capacity that will make you take notice! Don't worry about the BW on cows.			
Calving Ease	Carcass Traits	Growth	Replacement Females
**	****	****	****
<b>Performance</b>			
BW	100		
WW	626		
YW	1116		
Yrl Scrot	38.7		
<b>Perf. EPD's</b>			
CED	+7		
BW	+1.7		
WW	+41		
YW	+78		
Milk	+22		
Scrotal	+11		
<b>Carcass EPD's</b>			
Marb	+27		
REA	+0.09		
Fat	+0.043		
<b>\$ Values</b>			
\$EN	3.01		
\$W	25.11		
\$F	20.86		
\$G	16.91		
\$B	31.86		



## Lot # 5 DRI Precise Magnitude U308

Calved: 3/20/08 Purebred Black Angus Bull AAA # Pending			
O C C Magnitude 805M			
<b>DRI Precise Magnitude S049</b>			
DRI Enchantress 9042 Pre			
Leachman Saugahatchee 3000c			
<b>DRI Blackcap 9149 Saug</b>			
B C Blackcap 013			
Wide topped, deep rumped, smaller framed bull with an overall powerful muscle pattern. His 10 year old dam is a consistent performer in our herd and appears in multiple pedigrees. Very high \$EN fits with what we know about her and her progeny. This is another bull that grew early (weighing 1100+) and shut down at a very moderate mature size. As we've said before, this kind gets hurt on adjustment.			
Calving Ease	Carcass Traits	Growth	Replacement Females
**	**	***	***
<b>Performance</b>			
BW	99		
WW	611		
YW	1024		
Yrl Scrot	31.2		
<b>Perf. EPD's</b>			
CED	-1		
BW	+4.3		
WW	+41		
YW	+63		
Milk	+17		
Scrotal	-.99		
<b>Carcass EPD's</b>			
Marb	-.03		
REA	+1.16		
Fat	+0.008		
<b>\$ Values</b>			
\$EN	12.13		
\$W	22.91		
\$F	7.02		
\$G	9.77		
\$B	19.34		

## Lot # 6 DRI Present Value U154

Calved: 3/5/08 Purebred Black Angus Bull AAA # Pending			
N Bar Prime Time D806			
<b>Sinclair Net Present Value</b>			
Ideal 4456 of 6807 4286			
RR 9440 Scotch Cap 1483			
<b>DRI 1483 Gammer 7025</b>			
MB 0G8 Gammer 2609			
Long as a freight train & last of the NPV's which we've used on heifers for years with tremendous success. We just haven't had any problems calving them. This amazing cow (12 years old) is a big roomy cow and this is the smallest calf she's ever had. We feel comfortable recommending him for use on heifers under supervision. Consistently high for marbling, this would be a good candidate for calves that pay on the grid too!			
Calving Ease	Carcass Traits	Growth	Replacement Females
***	**	***	****
<b>Performance</b>			
BW	94		
WW	595		
YW	1070		
Yrl Scrot	34.9		
<b>Perf. EPD's</b>			
CED	+5		
BW	+1.3		
WW	+43		
YW	+80		
Milk	+26		
Scrotal	-.22		
<b>Carcass EPD's</b>			
Marb	+27		
REA	-.07		
Fat	+0.041		
<b>\$ Values</b>			
\$EN	-1.30		
\$W	27.35		
\$F	22.03		
\$G	13.62		
\$B	32.33		

# 20 Month Old Black Angus Bulls



Lot 7

DRI Blue Moon U049

Lot # 7				DRI Blue Moon U049				
Calved: 2/19/08		Purebred Black Angus Bull		AAA # Pending				
Bon View New Design 1407								
<b>RAB-EGL Blue Moon 4407M</b>								
Mill Brae Balnorma PM 0125								
Hunts Calculator 2720								
<b>DRI Nosegay 2191 Cal</b>								
Mill Brae RT Nosegay 7018								
<p>205 %IMF ratio, hence the +.79 marbling EPD. Weighed 1375 at scanning with a 12.4 REA and &lt;0.4" BF. Sometimes the high carcass bulls leave something to be desired, but NOT this bull! Very attractive &amp; deep. While his actual BW might not say heifer, both sides of his pedigree do. In his case, I think you're seeing the influence of a big, roomy dam. Use on heifers with supervision.</p>								
<b>Performance</b>				<b>Perf. EPD's</b>				
BW	93	WW	581	CED	+10	RE	+0.4	
YW	1179	YR	37.2	WW	+39	REA	+0.23	
Yr1 Scrot	37.2	Milk	+20	YW	+86	Fat	+0.52	
				<b>Carcass EPD's</b>				
				Marb				+0.79
				Scrotal				+0.22
				<b>\$ Values</b>				
				SEN				2.29
				SW				22.18
				SF				29.42
				SG				32.43
				SB				49.36
<b>Calving Ease</b>		<b>Carcass Traits</b>		<b>Growth</b>		<b>Replacement Females</b>		
***		****		****		****		

Lot # 8				DRI Blue Moon U065				
Calved: 2/23/08		Purebred Black Angus Bull		AAA # Pending				
Bon View New Design 1407								
<b>RAB-EGL Blue Moon 4407M</b>								
Mill Brae Balnorma PM 0125								
Sitz Alliance 6595								
<b>DRI Capett 3123 Aln</b>								
DRI Capett 0040 Cal								
<p>No holes anywhere on this bull. Use on heifers, use for top notch growth, use to improve the carcass quality of your calves! Ratio'd 84, 106 &amp; 104 for BW, WW, YW while posting 119, 102 and 90 for Marbling, REA and BF. Top of the line cows populate the bottom side of the pedigree. What more could you want in a bull??? 4 traits, 4 stars! Used by KCC to breed their heifers.</p>								
<b>Performance</b>				<b>Perf. EPD's</b>				
BW	78	WW	643	CED	+6	RE	+0.9	
YW	1153	YR	36.9	WW	+47	REA	+0.24	
Yr1 Scrot	36.9	Milk	+26	YW	+93	Fat	+0.41	
				<b>Carcass EPD's</b>				
				Marb				+0.57
				Scrotal				+0.36
				<b>\$ Values</b>				
				SEN				-5.38
				SW				28.21
				SF				33.33
				SG				29.97
				SB				44.10
<b>Calving Ease</b>		<b>Carcass Traits</b>		<b>Growth</b>		<b>Replacement Females</b>		
****		****		****		****		

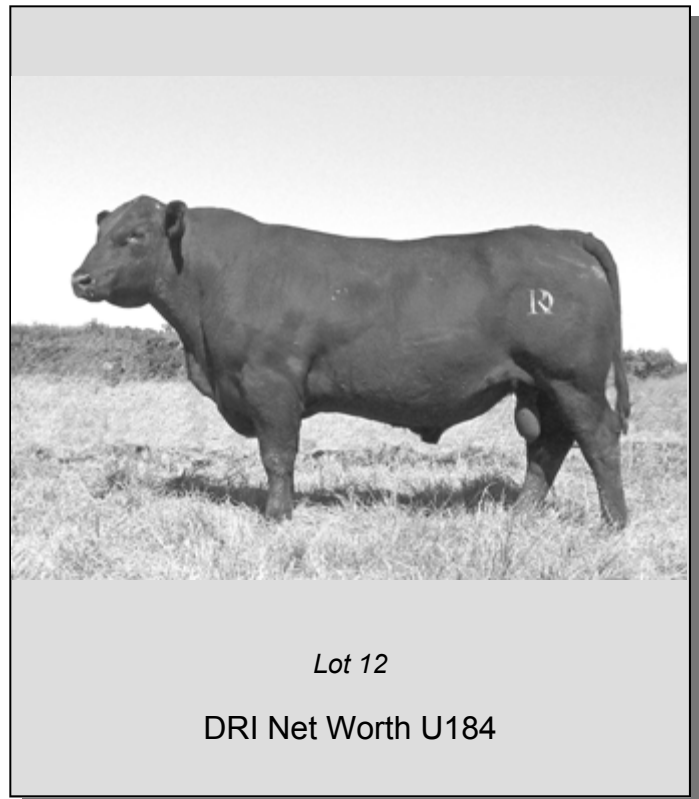
Lot # 9				DRI Blue Moon U141				
Calved: 3/4/08		Purebred Black Angus Bull		AAA # Pending				
Bon View New Design 1407								
<b>RAB-EGL Blue Moon 4407M</b>								
Mill Brae Balnorma PM 0125								
N Bar Emulation EXT								
<b>Miss Emulation 7149</b>								
Miss Oscar K 413								
<p>A heifer bull with some of the best WW &amp; YW EPD's in the bunch. Ratio'd 84 for birth then turned &amp; burned to post a 103 ratio at weaning. Great 12 year old cow on the bottom side who's always calves early and AI's back. She looks beautiful with a gorgeous udder. Last year's bull was a high seller who's got some beautiful calves in our weaning pen. You'll want to keep his daughters in your herd!</p>								
<b>Performance</b>				<b>Perf. EPD's</b>				
BW	84	WW	628	CED	+9	RE	-0.7	
YW	1095	YR	34.9	WW	+44	REA	+0.25	
Yr1 Scrot	34.9	Milk	+22	YW	+88	Fat	+0.32	
				<b>Carcass EPD's</b>				
				Marb				+0.46
				Scrotal				-0.46
				<b>\$ Values</b>				
				SEN				-0.85
				SW				26.77
				SF				29.48
				SG				27.15
				SB				44.88
<b>Calving Ease</b>		<b>Carcass Traits</b>		<b>Growth</b>		<b>Replacement Females</b>		
****		****		***		****		

# 20 Month Old Black Angus Bulls

Lot # 10				DRI Blue Moon U186			
Calved: 3/7/08				Purebred Black Angus Bull			
AAA # Pending							
Bon View New Design 1407				<b>Performance</b>			
<b>RAB-EGL Blue Moon 4407M</b>				BW 82			
Mill Brae Balnorma PM 0125				WW 569			
HPR Traveler 4014 1156				YW 1043			
<b>DRI Queen 3358 hpr</b>				Yrl Scrot 32.8			
DRI Queen 8120 Cal				<b>Perf. EPD's</b>			
<p>Weighed 1192 at scanning and ratio'd 125 for marbling while posting only a 76 ratio (.16") for BF. In other words, he was a top marbler while being one of the very leanest. He weighed 1166 coming off test, ratioing 111 and is a smaller framed bull. All that tells me he grew fast, reached maturity early and shut it down. Unfortunately, that effectively penalizes him when adjusting YW.</p>				CED n/a			
				BW +0.6			
				WW +32			
				YW +74			
				Milk +24			
				Scrotal -.76			
				<b>Carcass EPD's</b>			
				Marb +.43			
				REA +.21			
				Fat +.013			
<b>\$ Values</b>							
SEN 2.56							
SW 21.65							
SF 20.37							
SG 29.55							
SB 36.53							
Calving Ease	Carcass Traits	Growth	Replacement Females				
****	****	***	****				

Lot # 11				DRI Blue Moon U204			
Calved: 3/9/08				Purebred Black Angus Bull			
AAA # Pending							
Bon View New Design 1407				<b>Performance</b>			
<b>RAB-EGL Blue Moon 4407M</b>				BW 90			
Mill Brae Balnorma PM 0125				WW 615			
Larks Canyon 74D4				YW 1156			
<b>DRI Emma 1013 Canyon</b>				Yrl Scrot 38.8			
DRI Emma 9030 ND				<b>Perf. EPD's</b>			
<p>BW, WW, YW ratios of 97, 101 &amp; 104 plus a test gain ratio of 120! Now add a marbling ratio of 102 and you have some calves that'll gain and grade! Ice the cake with the fact he's a heifer bull and you have a complete package. These Canyon cows have been performing so well for us that we went back and bought as much semen as we could find. They make GREAT COWS! 4 traits, 4 stars!</p>				CED 10			
				BW -0.2			
				WW +43			
				YW +91			
				Milk +27			
				Scrotal +.30			
				<b>Carcass EPD's</b>			
				Marb +.41			
				REA +.25			
				Fat +.043			
<b>\$ Values</b>							
SEN -5.61							
SW 25.58							
SF 32.88							
SG 23.30							
SB 45.01							
Calving Ease	Carcass Traits	Growth	Replacement Females				
****	****	****	****				

Lot # 12				DRI Net Worth U184			
Calved: 3/7/08				Purebred Black Angus Bull			
AAA # Pending							
SAV 8180 Traveler 004				<b>Performance</b>			
<b>SAV Net Worth 4200</b>				BW 103			
SAV May 2410				WW 591			
Sitz Alliance 6595				YW 1154			
<b>DRI Justine 3031 Aln</b>				Yrl Scrot 37.8			
DRI Justine 1101 Cal				<b>Perf. EPD's</b>			
<p>Big-butted, tremendously muscular bull who will catch your eye guaranteed! Smoked 'em on test gaining 4.1 lbs/day on a test designed for 3.0. Ratio'd 120 for gain and 104 for YW, giving you growth to spare. This bull did carry a little more BW, but remember, we're scrupulously honest, will always report weights accurately and would never sell anything we think would cause you problems. He'll be no problem on mature cows.</p>				CED +2			
				BW +4.5			
				WW +47			
				YW +92			
				Milk +28			
				Scrotal +1.06			
				<b>Carcass EPD's</b>			
				Marb +.30			
				REA +.15			
				Fat +.046			
<b>\$ Values</b>							
SEN -7.23							
SW 19.80							
SF 32.32							
SG 17.40							
SB 39.23							
Calving Ease	Carcass Traits	Growth	Replacement Females				
**	****	****	****				



# 20 Month Old Black Angus Bulls



Lot 13

DRI S029 Freightliner U189

## Lot # 13 DRI S029 Freightliner U189

Calved: 3/7/08		Purebred Black Angus Bull		AAA # Pending	
Connealy Freightliner					
<b>DRI Freightliner S029</b>					
DRI Miss Emmy 4126 FD					
Sitz Alliance 6595					
<b>DRI Elba 3321 Aln</b>					
DRI Right Time Elba 7027					
Powerful son of our \$6000 2007 high-selling bull that attracted so much attention. This bull shows the same type with a touch more frame and great natural width and muscle expression. Ratio'd 106 for REA validating the muscularity of this bull. All the sires in his pedigree bring good females too, so this is one to select for all around potential for your herd. 3/4 brother to U237.					
Calving Ease	Carcass Traits	Growth	Replacement Females	\$EN	\$W
***	***	****	****	-2.54	27.42
				\$F	\$G
				30.15	12.99
				\$B	36.38

See photos of reference sires DRI Freightliner S028 and DRI Freightliner S029 on p. 14

## Lot # 14 DRI Freightliner U200

Calved: 3/9/08		Purebred Black Angus Bull		AAA # Pending	
Bon View Bando 598					
<b>Connealy Freightliner</b>					
Joana Erica of Conanga					
Hunts Calculator 2720					
<b>DRI Scotch Pride 3116 Cal</b>					
DRI Scotch Pride 8134Granite					
Freightliner x Cal means GREAT cows in our herd. We use this combination both in our registered and commercial cows to give us the kind of females that do it right, year after year. This is a very appealing bull with style and muscle to spare. Smaller frame size indicates cows that won't eat you out of house & home, very important in today's beef economy. Supported by his very high \$EN.					
Calving Ease	Carcass Traits	Growth	Replacement Females	\$EN	\$W
**	**	**	****	9.67	20.07
				\$F	\$G
				16.08	9.64
				\$B	20.77

## Lot # 15 DRI S029 Freightliner U237

Calved: 3/11/08		Purebred Black Angus Bull		AAA # Pending	
Connealy Freightliner					
<b>DRI Freightliner S029</b>					
DRI Miss Emmy 4126 FD					
Sitz Alliance 6595					
<b>DRI Georgina 4306 Aln</b>					
DRI Georgina 8099 EXT					
Another son of our 2007 high-selling bull. This bull will add some growth (ratio'd 106 & 104 for WW & YW), a little more frame and nice muscling to your calves. He ratio'd 108 for REA! On the bottom side of his pedigree, you have a tremendous granddam who's still very productive, clean uddered and easy keeping at 12. We have similar expectations for this bull's young dam. 3/4 brother to U189.					
Calving Ease	Carcass Traits	Growth	Replacement Females	\$EN	\$W
**	***	****	****	1.35	19.45
				\$F	\$G
				27.72	12.62
				\$B	34.13

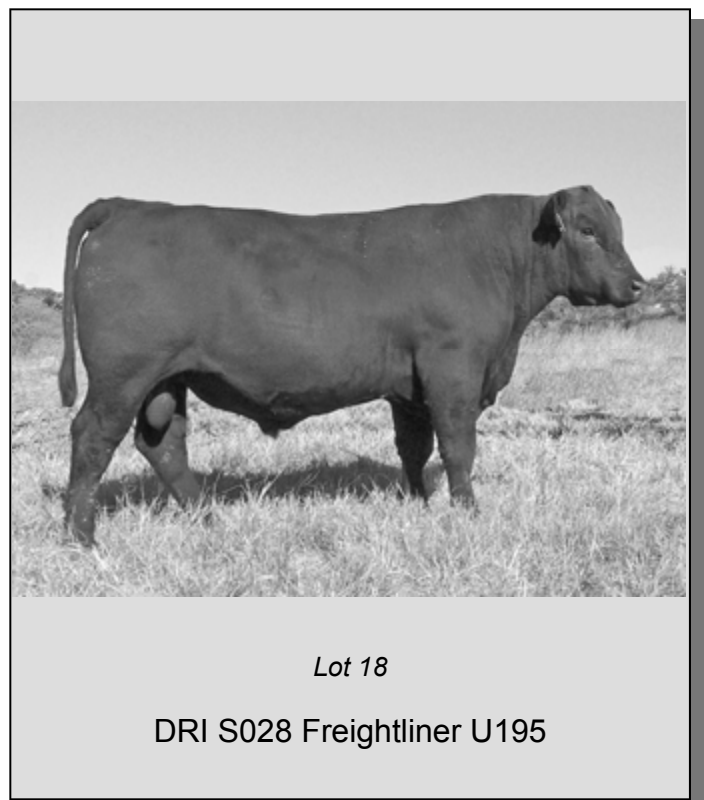
# 20 Month Old Black Angus Bulls

Lot # 16				DRI Freightliner U288			
Calved: 3/17/08				Purebred Black Angus Bull			
AAA # Pending							
Bon View Bando 598							
<b>Connealy Freightliner</b>							
Joana Erica of Conanga							
DRI Alliance 3138							
<b>DRI 3138 Vixon R356</b>							
DRI Vixon 0145 Fame							
<p>Heifer bull that ratio'd 102 &amp; 109 on marbling and REA. He was cranking it on during test, posting a 106 gain ratio. You can have your calving ease, good growth and great carcass all in one here. Lots of muscle expression, exhibiting what we call "piggy butt" meaning a lot of width &amp; depth. YW seems low, but the smaller frame means he hit 1150 early in the test and was done growing, so he adjusted back. Smaller framed, early maturing bulls get hurt when adjusting, but this is just the kind of cow we want in our herd!</p>				<b>Performance</b>			
				BW		75	
				WW		564	
				YW		1030	
				Yrl Scrot		43.6	
				<b>Perf. EPD's</b>			
				CED		n/a	
				BW		+0.2	
				WW		+40	
				YW		+77	
				Milk		+21	
				Scrotal		+1.81	
				<b>Carcass EPD's</b>			
				Marb		+0.09	
REA		+0.15					
Fat		+0.013					
<b>\$ Values</b>							
\$EN		4.58					
\$W		26.54					
\$F		20.27					
\$G		14.99					
\$B		25.09					
Calving Ease	Carcass Traits	Growth	Replacement Females				
****	***	***	****				


Lot # 17				DRI D028 Freightliner U346			
Calved: 3/31/08				Purebred Black Angus Bull			
AAA # Pending							
Connealy Freightliner							
<b>DRI Freightliner S028</b>							
DRI Miss Cally K 4012 Fcs							
C A Future Direction 5321							
<b>DRI Queenmere 3170 FD</b>							
DRI Queenmere 0124 Cal							
<p>EPD's available shortly after catalog day, but estimated to be BW&lt;+1.5, WW &gt;+45, YW &gt;+80 (sire &amp; dam EPD's are in box) Carcass looks great too! He was held up pending the results of genetic testing (he's clean), but those results weren't back in time. However, his numbers speak for themselves! This bull's sire is working @ Rockhill Ranch (Alma) and was one of the high-sellers in 2007. Deep hiped, well made bull with lots of eye appeal!</p>				<b>Performance</b>			
				BW		82	
				WW		743	
				YW		1249	
				Yrl Scrot		36.5	
				<b>Perf. EPD's</b>			
				CED		+7/+6	
				BW		+1.7/+1.8	
				WW		+45/+39	
				YW		+84/+68	
				Milk		+20/+25	
				Scrotal		+1.02/+0.24	
				<b>Carcass EPD's</b>			
				Marb		+0.19/+0.50	
REA		+0.03/+0.32					
Fat		+0.015/+0.027					
<b>\$ Values</b>							
\$EN		2.81/3.24					
\$W		25.50/27.05					
\$F		25.16/12.23					
\$G		16.53/29.29					
\$B		32.36/46.04					
Calving Ease	Carcass Traits	Growth	Replacement Females				
****	****	****	****				

See photos of reference sires DRI Freightliner S028 and DRI Freightliner S029 on p. 14

Lot # 18				DRI S028 Freightliner U195			
Calved: 3/8/08				Purebred Black Angus Bull			
AAA # Pending							
Connealy Freightliner							
<b>DRI Freightliner S028</b>							
DRI Miss Cally K 4012 Fcs							
Hunts Calculator 2720							
<b>DRI Barbara 1194 Cal</b>							
Mill Brae EXT Barbara 8007							
<p>Another son of one of our 2007 feature bulls, now working at Rockhill Ranch in Alma. This bull looks a lot like his sire with tremendous volume and capacity. Get out behind him to really appreciate the width of his hindquarter. 2 very solid cows on the bottom side of his pedigree who're still working hard in our herd. You've got to like his female siring potential along with his growth and muscle.</p>				<b>Performance</b>			
				BW		94	
				WW		610	
				YW		1103	
				Yrl Scrot		35.8	
				<b>Perf. EPD's</b>			
				CED		+7	
				BW		+1.6	
				WW		+41	
				YW		+76	
				Milk		+19	
				Scrotal		+0.64	
				<b>Carcass EPD's</b>			
				Marb		+0.19	
REA		-0.01					
Fat		+0.034					
<b>\$ Values</b>							
\$EN		6.49					
\$W		25.36					
\$F		18.96					
\$G		13.63					
\$B		27.30					
Calving Ease	Carcass Traits	Growth	Replacement Females				
***	**	****	****				



# 20 Month Old Black Angus Bulls



Lot 19  
DRI Calculator U151

Lot # 19				DRI Calculator U151	
Calved: 3/5/08		Purebred Black Angus Bull		AAA # Pending	
GDAR 711 Computer					
<b>Hunts Calculator 2720</b>					
RR 1148 Ida 720A					
Sitz Alliance 6595					
<b>DRI Delia R051 Aln</b>					
Lyons Delia 6151					
<p>Smaller framed Calculator with plenty of oomph to get those calves growing hard and fast (118 test ratio!) but not where they'll end up huge and eat you out of house and home. He's made right with a very smooth shoulder, so don't let the BW scare you away from using him on cows. We've never helped a mature cow that wasn't a breech, so we know what we're talking about when it comes to BW. Cal x Alliance = FEMALES!</p>					
Calving Ease	Carcass Traits	Growth	Replacement Females	CED	n/a
**	***	***	****	BW	+4.5
				WW	+39
				YW	+72
				Milk	+20
				Scrotal	+1.04
<b>Perf. EPD's</b>					
				<b>Perf. EPD's</b>	
				Marb	+0.22
				REA	+.02
				Fat	+.042
<b>\$ Values</b>					
				\$EN	6.62
				\$W	18.99
				\$F	15.92
				\$G	15.09
				\$B	24.31

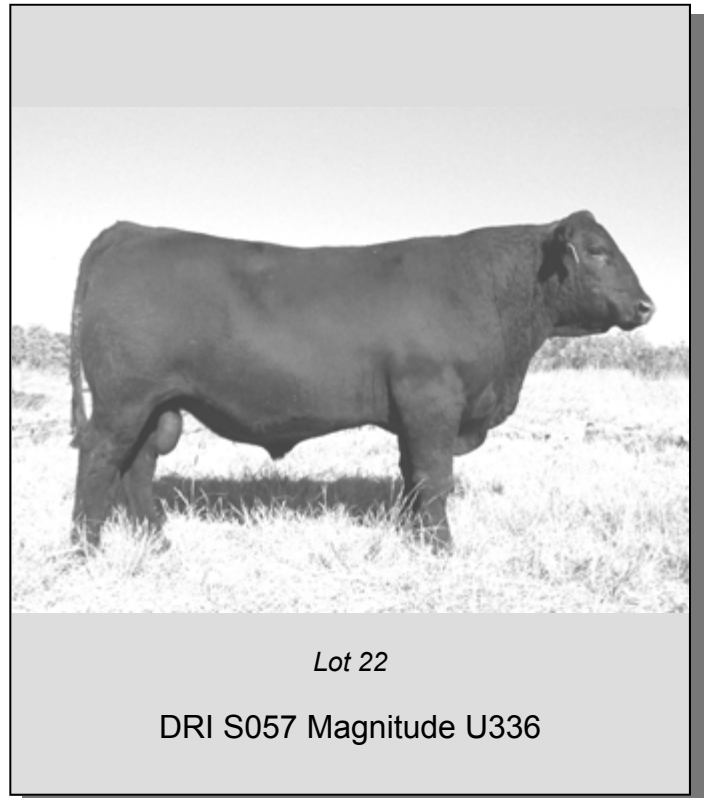
Lot # 20				DRI Maximillian U084	
Calved: 2/25/08		Purebred Black Angus Bull		AAA # Pending	
G T Maximum					
<b>Basin Max 602C</b>					
Basin Eline Erica 315U					
DRI Alliance 3138					
<b>DRI Blackcap R306 3138</b>					
DRI Blackcap 1049 Canyon					
<p>101, 105 &amp; 107 ratios for BW, WW &amp; YW while ratioing 109 for REA and 80 for BF. In otherwords, a powerful, masculine bull that will stamp your calves with muscle and growability. You can see it in his phenotype as he's got a lot of bone, substance and is solid as a rock. Now add the cow makers on both sides of the pedigree (602C, Alliance and Canyon) and you have an all around sire for your herd.</p>					
Calving Ease	Carcass Traits	Growth	Replacement Females	CED	n/a
***	***	****	****	BW	+2.2
				WW	+45
				YW	+90
				Milk	+20
				Scrotal	+.34
<b>Perf. EPD's</b>					
				<b>Perf. EPD's</b>	
				Marb	+.15
				REA	+.08
				Fat	+.017
<b>\$ Values</b>					
				\$EN	1.15
				\$W	22.82
				\$F	31.09
				\$G	15.04
				\$B	33.19

Lot # 21				DRI Primary Calculation U011	
Calved: 1/29/08		Purebred Black Angus Bull		AAA # Pending	
GDAR 711 Computer					
<b>Hunts Calculator 2720</b>					
RR 1148 Ida 720A					
Three Trees Prime Cut 0145					
<b>DRI Blackcap S197</b>					
DRI Blackcap 9149 Saug					
<p>Bull was too old at scanning to use his data for EPD's. Actual data was 2.55 % IMF, 11.1 sq. in. REA with .21" fat. This bull is a very smooth made heifer bull who grew very nicely on test, ratioing 107. A heifer bull with good growth is a rare combination. Sired by Calculator with cow-maker genetics stacked on both sides of the pedigree, he'd be a good choice for those retaining heifers. (carcass EPD's are sire/dam)</p>					
Calving Ease	Carcass Traits	Growth	Replacement Females	CED	n/a
****	***	***	****	BW	+0.9
				WW	+37
				YW	+67
				Milk	+18
				Scrotal	n/a
<b>Perf. EPD's</b>					
				<b>Perf. EPD's</b>	
				Marb	+.45/+.18
				REA	+.11/+.11
				Fat	+.080/+.044
<b>\$ Values</b>					
				\$EN	9.70
				\$W	25.33
				\$F	12.02
				\$G	n/a
				\$B	n/a

# 20 Month Old Black Angus Bulls

## Lot # 22 DRI S057 Magnitude U336

Calved: 3/29/08 Purebred Black Angus Bull AAA # Pending					
O C C Magnitude 805M					
<b>DRI Magnitude S057</b>					
DRI Miss Laura 4054					
Connealy Freightliner					
<b>DRI Justine R014 CF</b>					
DRI Justine 3187 Pfred					
Excellent growth, especially for a heifer bull. Ratio'd 99 for BW and 104 for both WW & YW. Right on the average for marbling and ribeye while having very little backfat. All this indicates this bulls calves ought to be growing fools. You can see it in this bull's natural thickness and depth. He's smooth, deep gutted, tight-sheathed and level topped.					
Calving Ease	Carcass Traits	Growth	Replacement Females	<b>Performance</b>	
				BW	90
***	***	****	***	WW	664
				YW	1173
				Yrl Scrot	39.5
				<b>Perf. EPD's</b>	
				CED	n/a
				BW	+0.2
				WW	+42
				YW	+78
				Milk	+16
				Scrotal	-.07
				<b>Carcass EPD's</b>	
				Marb	+0.06
				REA	+0.05
				Fat	+0.004
				<b>\$ Values</b>	
				\$EN	8.53
				\$W	26.10
				\$F	20.49
				\$G	14.14
				\$B	20.11



## Lot # 23 DRI 357 Magnum U357

Calved: 4/4/08 Purebred Black Angus Bull AAA # Pending					
O C C Magnitude 805M					
<b>DRI Precise Magnitude S049</b>					
DRI Enchantress 9042 Pre					
Hunts Calculator 2720					
<b>DRI Emma 3153 Cal</b>					
DRI Emma 9FB3 7055					
Ratio'd 106 & 103 for marbling & REA. Very large Scrotal indicates his daughters will be fertile at a young age. Very nice set of all around EPD's with no holes and nice \$ Values to boot. We hesitate to keep young bulls like this in the bull pen, but made an exception for 2 April calves and you'll be glad we did!					
Calving Ease	Carcass Traits	Growth	Replacement Females	<b>Performance</b>	
				BW	96
***	****	****	***	WW	702
				YW	1169
				Yrl Scrot	40.7
				<b>Perf. EPD's</b>	
				CED	+5
				BW	+2.4
				WW	+45
				YW	+70
				Milk	+17
				Scrotal	+0.21
				<b>Carcass EPD's</b>	
				Marb	+0.18
				REA	+0.15
				Fat	+0.013
				<b>\$ Values</b>	
				\$EN	9.97
				\$W	27.72
				\$F	11.93
				\$G	18.47
				\$B	28.86

## Lot # 24 DRI S057 Magnitude U331

Calved: 3/24/08 Purebred Black Angus Bull AAA # Pending					
O C C Magnitude 805M					
<b>DRI Magnitude S057</b>					
DRI Miss Laura 4054					
Hunts Calculator 2720					
<b>DRI Elba 2184 Cal</b>					
M B Bando Elba 2524					
Heifer bull! Good growth for a heifer bull and a 103 REA ratio indicate he'll add thickness & muscle to your calves, a rare commodity in a heifer bull. He looks it too, with muscle that ties down deep and a long hip. Extremely high \$EN indicates that his daughters will need less feed, which is very important when you're trying to carry more cows on less grass and hay! Weighed 1100 at YW, but he'd reached his mature size and was just bidding his time, so he got adjusted back.					
Calving Ease	Carcass Traits	Growth	Replacement Females	<b>Performance</b>	
				BW	80
****	***	***	***	WW	586
				YW	1024
				Yrl Scrot	34.3
				<b>Perf. EPD's</b>	
				CED	+8
				BW	-0.6
				WW	+35
				YW	+60
				Milk	+15
				Scrotal	+0.07
				<b>Carcass EPD's</b>	
				Marb	+0.16
				REA	+0.09
				Fat	+0.019
				<b>\$ Values</b>	
				\$EN	14.66
				\$W	26.69
				\$F	6.42
				\$G	18.63
				\$B	13.92

# 20 Month Old Black Angus Bulls

Lot # 25		DRI S057 Magnitude U299	
Calved: 3/18/08		Purebred Black Angus Bull	
AAA # Pending			
O C C Magnitude 805M			
<b>DRI Magnitude S057</b>			
DRI Miss Laura 4054			
N Bar Emulation EXT			
<b>DRI Blackcap EXT 8056</b>			
B C Blackcap 013			
<p>Very easy fleshing bull as is his 11 year old dam. She typically breeds AI every year but slipped a little this year. However, she calved AI last year and was bred AI again this year so it was a 1 year blip. This is a powerful, smaller framed bull who's muscular and masculine. He never fails to catch our eye in the pasture.</p>			
		<b>Performance</b>	
		BW	95
		WW	581
		YW	1039
		Yrl Scrot	36.2
		<b>Perf. EPD's</b>	
		CED	+7
		BW	+1.6
		WW	+33
		YW	+59
		Milk	+13
		Scrotal	+0.02
		<b>Carcass EPD's</b>	
		Marb	+0.04
		REA	+0.05
		Fat	+0.043
		<b>\$ Values</b>	
		\$EN	16.84
		\$W	22.72
		\$F	6.22
		\$G	8.46
		\$B	12.71
Calving Ease	Carcass Traits	Growth	Replacement Females
***	**	**	****

Lot # 26		DRI S057 DMag U133	
Calved: 3/3/08		Purebred Black Angus Bull	
AAA # Pending			
OCC Magnitude 805m			
<b>DRI Magnitude S057</b>			
DRI Miss Laura 4054			
DRI Calculator 0057			
<b>DRI Geogina 2326 Dcal</b>			
DRI Georgina 9176 LB			
<p>We're really liking these S057 sired calves and he's a great example. Moderate birth, great growth, solid carcass and good maternal potential. This bull is one of the highest body capacity bulls in the group with the depth and guts needed to convert poor quality forage into high quality beef! Just the kind of bull you want siring pounds of calves to sell and replacement range females.</p>			
		<b>Performance</b>	
		BW	90
		WW	612
		YW	1172
		Yrl Scrot	39.6
		<b>Perf. EPD's</b>	
		CED	+9
		BW	+1.4
		WW	+39
		YW	+69
		Milk	+19
		Scrotal	+0.44
		<b>Carcass EPD's</b>	
		Marb	+0.18
		REA	+0.17
		Fat	+0.027
		<b>\$ Values</b>	
		\$EN	8.32
		\$W	26.07
		\$F	13.15
		\$G	17.82
		\$B	24.38
Calving Ease	Carcass Traits	Growth	Replacement Females
***	***	****	***

